



Teams,

Load in will start at 10AM Thursday 27th.

*****LOAD OUT INSTURCTIONS BELOW*****

NO VEHICLES OF ANY KIND WILL BE PERMITTED IN THE PADDOCK AT ANYTIME PER MOTOGP GUIDELINES.

Towing will be enforced and executed by MOTOGP/COTA.

Do not drill into pavement to secure awnings, you will be fined by the track for repairs.

Questions? please email jwade@motoamerica.com

P2 Parking Location

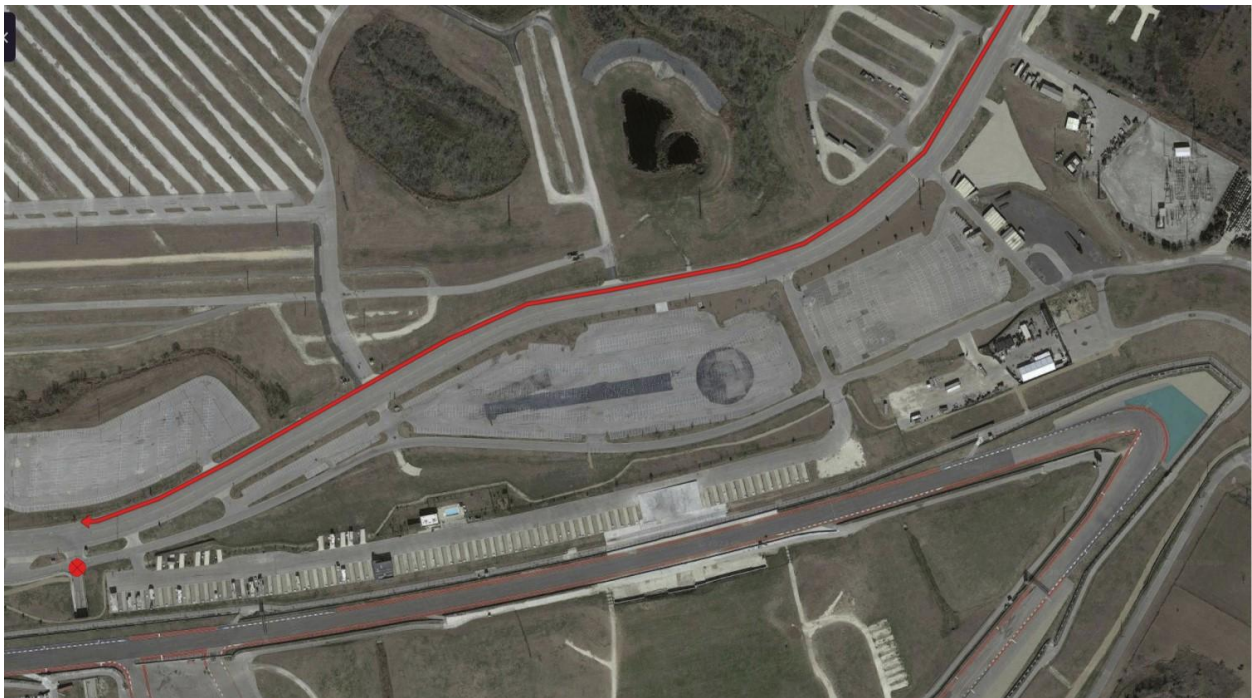
Blue Box Near Turn 1 (trams will be running Friday-Sunday)



STAGING

ALL TEAMS will be staged in the far-right lane along COTA Blvd. against the curb starting at Tunnel 2 and running in a single line all the way down to Elroy Rd.

See Red Line Shown Below, Red Circle is Tunnel.



LOAD IN ORDER

Tuesday 5PM	
MA Tech	
MA Hospitality	
Parts Unlimited	
Dunlop	
Teams	
Wednesday 5PM	
HSBK	
REAL STEEL	
MP13	
Jones Honda	
Estenson Racing	
Tytlers	
Chase Black	
Bettencourt	
Royalty	
Ice Barn	
Team Envy	
San Marcos	
Team Robert	
D&D Racing	

RV Camping

You must contact COTA directly; MA cannot offer any camping of any sort for MotoGP event.

[Available Sites | COTA Camping - Austin, TX \(campspot.com\)](#)

LOAD OUT INSTRUCTIONS

TBD